



Prism Softech

P **R** **I** **S** **M**
Optical **M**ark **R**eader

Cost- Effective

Quick, Accurate
& Detailed Results

OMR Sheet Evaluation Software

! No Costly OMR Scanner Required
Normal Document (ADF) Scanner
Is Enough

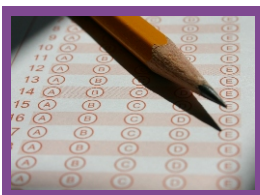
Highly
Adaptable
and Expandable
tool Systematized
to suit your
requirement



Evaluate 25 or More Scanned Images every minute, depending upon the speed of your system, with facility of send customize SMS and Email Results to each Candidate

How it Works ?

1. Collect OMR Sheets



2. Scan All OMR sheets
using an ADF Scanner



3. Start Prism OMR Solution and
Evaluate Scanned Images



4. View, Print and Send SMS &
Email Results





Prism OMR Overview:

Prism OMR Solution is a state-of-art answer to problems being faced in checking OMR sheets, of all types, in any activity area viz., Education, Commercial, Administration, Census, Survey and so on.....providing a faster and immaculate tool for guaranteed accuracy.

OMR Solution has been developed by Prism Softech with a view to facilitating in all activity areas, predominantly educational institutions, in conducting tests, checking answer sheets and declaring results with utmost and flaw-less precision.

Keeping the constraints in mind of those organizations which can't afford unreasonably exorbitant OMR scanners, Prism has been designed to work with financially manageable Automatic Document Scanners (ADF). Thus a cheaper alternative to the expensive OMR scanners.

Advantage of ADF Scanner over OMR Scanner:

The purpose of OMR Scanner is to process results from the answer sheets of objective type examinations only and the Price of these Scanners start with around Rs.200000/-. In addition to heavy one- time investment they also need an undesirably expansive maintenance and service contracts.

With Prism-compatible Automatic Document Feeder (ADF) scanners you have the double benefit for scanning OMR sheet with Prism OMR Solution as well as any loose document in Simplex (Single Side) or Duplex (Double Side) Mode. Price of these scanner starts with a meager Rs.18500/- with very low maintenance cost.

About OMR

What is OMR

Optical Mark Reader (OMR), also called "mark sensing", is a system of scanning technology in which data is input via marks, with pencil or ball-point pen, made by respondents in predefined locations on a form.

When to use OMR

When a large volume of data is desired to be processed with utmost precision in a short period of time

Advantages of using OMR

- Effortless ease in filling questionnaires since "box answers" are marked by the students or the respondents with an ordinary pencil or ball-point pen .
- High speed of reading/ recognition
- Reliability with no recognition errors.

OMR Application Areas

The use of OMR is not confined only to educational institutions or data collection agencies but has a wide utility in almost every sphere of business activity ranging from a production house to health care agencies which use OMR to streamline their data input processes and reduce input error. Some areas for using this OMR application are as follows:

Education (Institutes, School, College, Universities)

- Pre-Admission Queries by Students
- Registration of Students with all Personal Information
- Processing results of Regular periodical Tests
- Students' Attendance
- Faculty performance evaluation based on the Student's feedback
- Application forms
- Certification exams
- Sports tests
- Students' elections
- Physical fitness measurements

Commercial and Administrative

- Recruitments
- Promotional exams
- Interview sheets
- Quality control
- Working attitude control
- Business daily reports
- Survey of Employees consciousness
- Prize contests

Censuses, Surveys and Others

- Census Data Collection
- Consumer surveys
- Product evaluation





- Membership subscription forms
- Lotteries/Voting
- Banking and Insurance Loan Applications
- Test conducted by Public or Private Institutes
- Customer's Feedback

Software Features

COST EFFECTIVE

This software is a complete replacement alternative to costly OMR scanner. While OMR Scanners or OMR Machines are costly (Starting Rs.200,000+), they also need an extravagant maintenance and service contract. Automatic Document Feeder (ADF) Scanner, in comparison, is much cheaper and, hence ensures financial viability.

ACCURACY

Besides being cost effective, the software is intelligent and 100% accurate.

SPEED

Evaluates 25 or More Scanned Images every minute, depending upon the speed of your system.

OMR ANSWER SHEET DESIGN

Unlike OMR Scanners or OMR Machines, no specified OMR sheets are required. You can use any type of paper and can design your own OMR sheet. Logo and name can be added and printed on the sheet at the client's end.

MARKING CIRCLES

Students are free to use any blue / black ball-point pen or dark HB pencil to fill the circle. The OMR software is designed intelligent enough to read even the partially filled circles. Any sort of dirt, scratch or line between the questions and option circles has no impact on the accuracy.

DETAILED RESULTS

Various types of Reports in Pre-defined Format including Printing of mark-sheets, analyzing reports and charts etc. Rank, Percentage, Percentile, Batch, Center, Subject Wise Result Analysis. Not only this but Scope for customization of reports to suit your requirement also is taken care of.

OTHERS

- Facility of SMSing and E-mailing for Reminders and Results

to each individual candidate.

- Supports more than one paper or subject combinations.
- Result Analysis with facility of Bonus Marking (required if a question is wrong)
- Imports Master Data of Students and Contacts from Excel Format
- Export Result Data in Excel Format
- Reports Rejected Images at the time of Evaluation of Scanned Images.
- Points out images with deviation for manual verification after Evaluation.
- Tracking each student's test record over multiple tests with Graphitic Presentation

Salient Features

- User Friendly Software, No Technical skills required to operate the software, 15 Minute training.
- Standardized well tested product.
- Supports all type of objective test paper pattern exams
- Round-the-Clock Technical Support.



Services

- Supply of Automatic Document Feeder (ADF) scanners for OMR data and Image processing.
- Supply of software compatible OMR sheets (If required by client)
- Providing support, service and maintenance to existing OMR implementation

Time is Like Money: You can either spend, invest or waste !



ADF Scanners	Scanning Speed per Minute	Daily Duty Cycle	ADF Capacity	Mode Performance	Weight in Kgs	Document Size	Scanner Type	Approx. Price in INR
Epson GT-S80	40	2000	75	Duplex	4.6	A4	ADF Only	
Epson GT-S50	25	1500	75	Duplex	4.6	A4	ADF Only	
Epson GT-1500	10	400	40	Simplex	3.9	A4	ADF & Flatbed	
Kodak i1210	30	3000	50	Simplex	5.2	A4	ADF Only	
Kodak i1220	30	3000	50	Duplex	5.2	A4	ADF Only	
Kodak i1310	60	5000	50	Simplex	5.2	A4	ADF Only	
Kodak i1320	60	5000	50	Duplex	5.2	A4	ADF Only	
Fujitsu Fi 6130	30	3000	50	Duplex	3.5	A4	ADF Only	



Terms and Conditions :

1. Sales Tax has not been included in above Scanner and Software Prices.
2. Scanning Speed as shown above will be in Color mode at 200 DPI.
3. All Scanners as shown above have the Warranty for 1 Year.

*Disclaimer: We do not claim any guarantee for the prices. It might not be correct at all times although we try our best to do the same.

About Prism Softech

Prism Softech is a provider of technology solutions for Generalized and Customized Software's. Our role is to provide realistic solutions around today's technology and to make it future proof and utilize new technology as it arrives.

Other Products

SANDESH is a Powerful and easy to use messaging utility that allows you to create and send group (mass) SMS and E-Mail messages to list of selective contacts, individuals globally. It allows you to create and send bulk SMS from PC to your customers via mobile phone or Internet.

FEE MANAGER is a student-based accounting program designed to control tuition fees at educational institutes. Fee Manager helps you to define your own fee heads and discounts that can be applied to individual.



Prism Softech

15, Sarvodaya Colony, Tonk Phatak, JAIPUR-302015

Phone : +91-141-259-0484 ,+91-141-395-0692
+91-935-136-1730, +91-941-331-5086

Email : info@prismsoftech.com
prismsoftech@gmail.com

Visit us : www.prismsoftech.com